

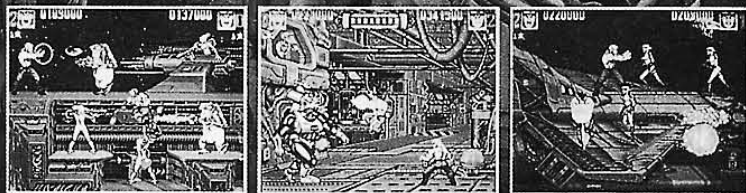
OPERATOR'S MANUAL

STRIKESBACK

TM

2 PLAYERS
SIMULTANEOUS

gaelco
COPYRIGHT 1994



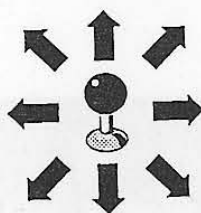
gaelco, s.a.

ESCIPION, 9/11 08023 BARCELONA - SPAIN PHONE 417 36 26 - FAX 417 28 02

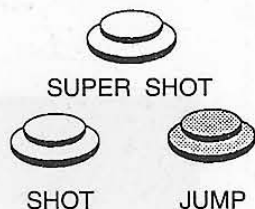
P C B CONECTOR JAMMA

CONTROL PANEL

SOLDER SIDE			COMPONENTS SIDE
GND	A	1	GND
GND	B	2	GND
+5V	C	3	+5V
+5V	D	4	+5V
N.C.	E	5	N.C.
+12V	F	6	+12V
	H	7	
COIN COUNTER 2 (COIN LOCK OUT 2)	J	8	COIN COUNTER 1 (COIN LOCK OUT1)
SPEAKER (-)	K	9	SPEAKER (+)
N.C.	M	11	N.C.
VIDEO GREEN	N	12	VIDEO RED
VIDEO SYNC	P	13	VIDEO BLUE
SERVICE SW	R	14	VIDEO GND
N.C.	S	15	TEST SW
COIN 2	T	16	COIN 1
2P START	U	17	1P START
2P UP	V	18	1P UP
2P DOWN	W	19	1P DOWN
2P LEFT	X	20	1P LEFT
2P RIGHT	Y	21	1P RIGHT
2P SHOT	Z	22	1P SHOT
2P JUMP	a	23	1P JUMP
2P SUPER SHOT	b	24	1P SUPER SHOT
N. C.	c	25	N. C.
N. C.	d	26	N. C.
GND	e	27	GND
GND	f	28	GND

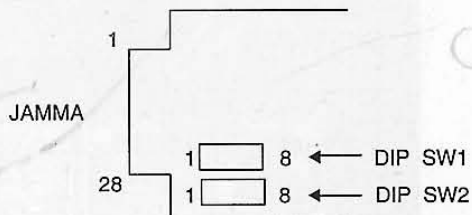


CONTROL STICK



MONITOR	HORIZONTAL
GAME STYLE	1 PLAYER o 2 PLAYERS SIMULTANEOUS

POSITIONS OF DIP SW



COIN / CREDIT OPTION SWITCH SETTING

DIP SW 1

OPTION		S1	S2	S3	S4	S5	S6	S7	S8
C O I N 1	1 COIN 1 CREDIT						OFF	OFF	OFF
	2 COINS 1 CREDIT						OFF	OFF	ON
	3 COINS 1 CREDIT						OFF	ON	OFF
	4 COINS 1 CREDIT						OFF	ON	ON
	5 COINS 1 CREDIT						ON	OFF	OFF
	6 COINS 1 CREDIT						ON	OFF	ON
	3 COINS 2 CREDITS						ON	ON	OFF
	4 COINS 3 CREDITS						ON	ON	ON
C O I N 2	1 COIN 1 CREDIT			OFF	OFF	OFF			
	1 COIN 2 CREDITS			OFF	OFF	ON			
	1 COIN 3 CREDITS			OFF	ON	OFF			
	1 COIN 4 CREDITS			OFF	ON	ON			
	1 COIN 5 CREDITS			ON	OFF	OFF			
	1 COIN 6 CREDITS			ON	OFF	ON			
	2 COINS 3 CREDITS			ON	ON	OFF			
	3 COINS 4 CREDITS			ON	ON	ON			
START 1 CR. / CONT. 1 CR.			OFF						
START 2 CR. / CONT. 1 CR.			ON						
FREE PLAY		NO	OFF						
		YES	ON						

OPTION SWITCH SETTING

DIP SW 2

OPTION		S1	S2	S3	S4	S5	S6	S7	S8
GAME DIFICULTY	1 NORMAL							OFF	OFF
	2 EASY							OFF	ON
	3 HARD							ON	OFF
	4 HARDEST							ON	ON
NOT USED							OFF		
NUMBER OF LIVES	2				OFF	OFF			
	3				OFF	ON			
	4				ON	OFF			
	1				ON	ON			
ADVERTISE SOUND	YES			OFF					
	NO			ON					
NOT USED			OFF						
TEST	NO	OFF							
	YES	ON							

