

# 取扱説明書

OPERATOR'S MANUAL



HOW TO PLAY	
<p>帽子の急速落下 Exchanges left and right hats</p>	<p>帽子の入れかえ SALE時消す 帽子の決定</p> <p>Decision to delete a hat at time of sale (decide which hat to delete)</p> <p>Rapidly falling hat</p>
使用電源 Power Supply	DC+5V DC+12V
CRT画面 Monitor	横画面 horizontal
ゲームスタイル Game Style	1P、2P同時プレイ可 1player Or 2player Simultaneous

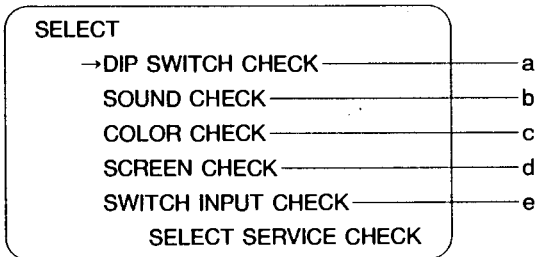


## DIP SW 2

		1	2	3	4	5	6	7	8
HAT落下速度 Hat fall velocity	Nomal	OFF	OFF						
	Easy	ON	OFF						
	Hard	OFF	ON						
	Super	ON	ON						
END LINEの位置 End line position	Nomal			OFF	OFF				
	Easy			ON	OFF				
	Hard			OFF	ON				
	Super			ON	ON				
Test Mode	off					OFF			
	on					ON			
Flip Flop	No						OFF		
	Yes						ON		
Demo Sound	on							OFF	
	off							ON	
N. C.									OFF

## Test Mode 画面表示

Test mode screen display



DIP-2を5-ONにして電源を入れると左の画面になります。

レバーの上下でCHECKモードを選んで、サービススイッチを押してください。

Turn ON position 5 of DIP-2 to power up the screen on the left. Select the check mode by moving the lever up or down, then press the service switch.

- a DIP SWITCH CHECK ————— デイプスイッチの状態をみます。  
View current positions of the dip switch.
- b SOUND CHECK ————— 音声の確認に使用します。  
(SOUND NO. 64~191) Check sound.
- c COLOR CHECK ————— 色の調整に使用します。  
Adjust color.
- d SCREEN CHECK ————— モニターの調整に使用します。  
Adjust the monitor.
- e SWITCH INPUT CHECK ————— スイッチ入力の確認に使用します。  
Check switch input.

「H A T R I S」  
Connector Diagram

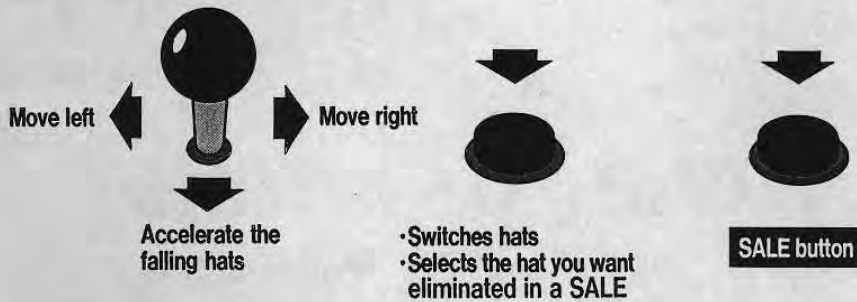
SOLDER SIDE (ハンダ面)		COMPONENT SIDE (部品面)
G N D	A 1	G N D
G N D	B 2	G N D
+ 5 V	C 3	+ 5 V
+ 5 V	D 4	+ 5 V
	E 5	
+ 12 V	F 6	+ 12 V
	H 7	
COIN COUNTER 2	J 8	COIN COUNTER 1
	K 9	
SPEAKER (-)	L 10	SPEAKER (+)
	M 11	
VIDEO (GREEN)	N 12	VIDEO (RED)
VIDEO (SYNC)	P 13	VIDEO (BLUE)
SERVICE	R 14	VIDEO (GND)
	S 15	
COIN SW 2	T 16	COIN SW 1
START SW 2	U 17	START SW 1
2P CONTROL1 UP	V 18	1P CONTROL1 UP
2P CONTROL2 DOWN	W 19	1P CONTROL2 DOWN
2P CONTROL3 LEFT	X 20	1P CONTROL3 LEFT
2P CONTROL4 RIGHT	Y 21	1P CONTROL4 RIGHT
2P CONTROL5 PUSH1	Z 22	1P CONTROL5 PUSH1
2P CONTROL6 PUSH2	a 23	1P CONTROL6 PUSH2
	b 24	
	c 25	
	d 26	
G N D	e 27	G N D
G N D	f 28	G N D

# THE FAST-MOVING HAT PUZZLE

# HATRIS™

**Six types of hats fall one after another.  
Stack five of each to make one set.  
How many sets can you make?**

## HERE'S HOW TO PLAY



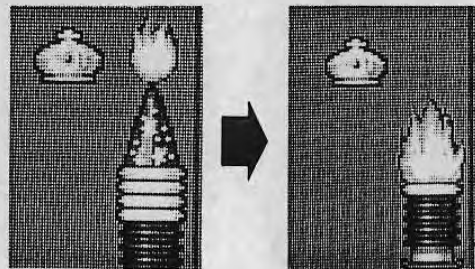
## THE SIX TYPES OF HATS



## SAVED BY FIRE!



Use fire to burn misplaced hats. (The crown is the only one that can't be burned.)



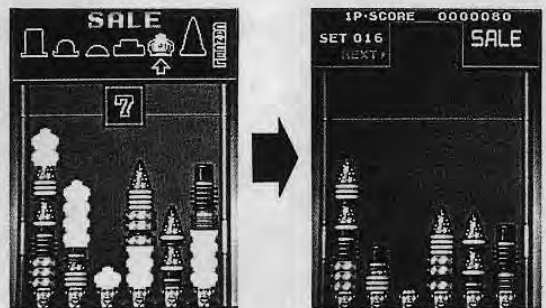
# THE FAST-MOVING HAT PUZZLE

# HATRIS™

## ■ USING THE SALE

A SALE can occur each time you have 15 sets. Cancel the SALE to save it for later. Press the **SALE button** when you get in trouble, and you can eliminate one type of hat.

Pick the right one, or you lose!



## ■ THE SECRET OF HATRIS

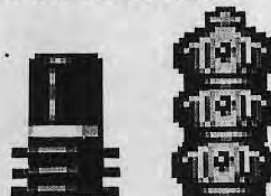
★ Take advantage of the different heights of the stacked hats.

● For example.....



The top hat is taller

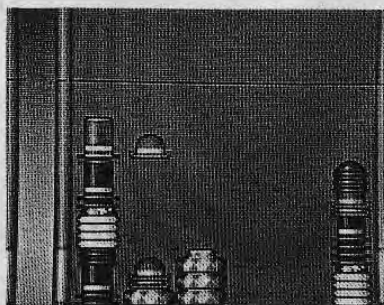
When stacked.....



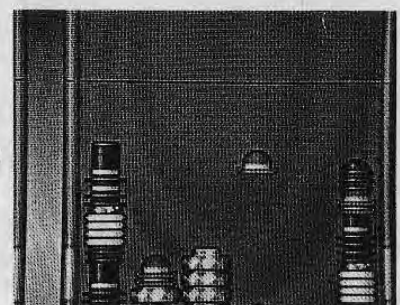
The stack of crowns is taller

★ Fast moves!

● While you're stacking a hat on one side, you can quickly shift the other hat sideways.



Stack on the left side



Quick move to the right