

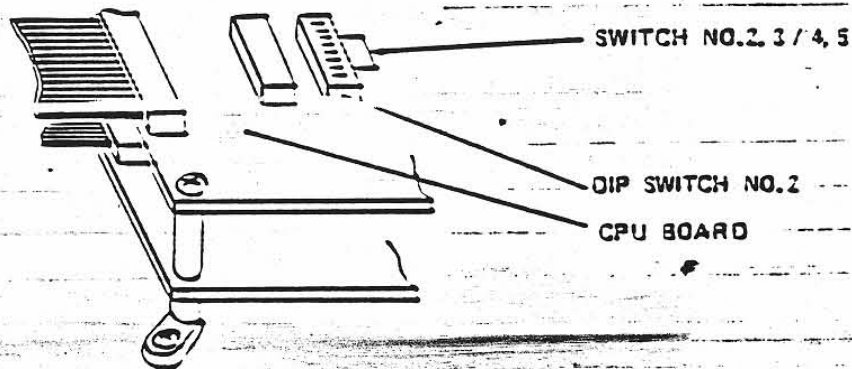
# HANG-ON

## ゲーム難易度の設定 (ライドオン型)

本機のゲーム難易度はCPUボード上のディップ・スイッチ No.2により

① 地雷の出現頻度 と ② ゲーム時間の調整 が可能で、各々4段階の設定ができます。

工場出荷時はどちらもMEDIUM設定となっており、プレイヤーの上達に応じて適宜、難しい設定にして下さい。



### ① 地雷の出現頻度 (SWITCH 2, 3で設定)

SWITCH NO.	SWITCH NO.	地雷の出現頻度	難易度
3	2		
OFF	OFF	—————	MEDIUM ← 出荷時
OFF	ON	MEDIUM設定に対し30%減	EASY
ON	OFF	" 40%増	HARD
ON	ON	" 80%増	HARDEST

### ② ゲーム時間調整 (SWITCH 4, 5で設定)

SWITCH NO.	SWITCH NO.	ステージ毎のゲーム時間(秒)					難易度
5	4	1	2	3	4	5	
OFF	OFF	90	55	55	55	55	EASY
OFF	ON	85	55	55	55	55	MEDIUM ← 出荷時
ON	OFF	80	55	55	55	55	HARD
ON	ON	75	55	55	60	55	HARDEST

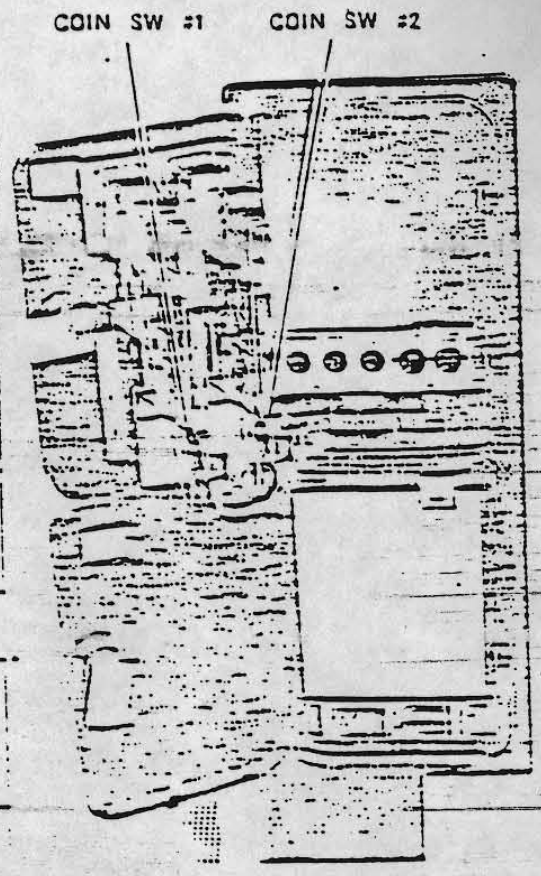
# ディップ・スイッチ

## ○ コイン・クレジットの設定

DIP SW #1

OPTION	1	2	3	4	5	6	7	8
1 COIN 1 CREDIT	OFF	OFF	OFF	OFF	OFF	OFF	OFF	OFF
1 COIN 2 CREDITS	ON	OFF	OFF	OFF	ON	OFF	OFF	OFF
1 COIN 3 CREDITS	OFF	ON	OFF	OFF	OFF	ON	OFF	OFF
1 COIN 4 CREDITS	ON	ON	OFF	OFF	ON	ON	OFF	OFF
1 COIN 5 CREDITS	OFF	OFF	ON	OFF	OFF	OFF	ON	OFF
1 COIN 6 CREDITS	ON	OFF	ON	OFF	ON	OFF	ON	OFF
2 COINS 1 CREDIT	OFF	ON	ON	OFF	OFF	ON	ON	OFF
3 COINS 1 CREDIT	ON	ON	ON	OFF	ON	ON	ON	OFF
4 COINS 1 CREDIT	OFF	OFF	OFF	ON	OFF	OFF	OFF	ON
2 COINS 3 CREDITS	ON	OFF	OFF	ON	ON	OFF	OFF	ON
2 COINS 1 CREDIT								
4 COINS 2 CREDITS	OFF	ON	OFF	ON	OFF	ON	OFF	ON
5 COINS 3 CREDITS								
6 COINS 4 CREDITS								
2 COINS 1 CREDIT	ON	ON	OFF	ON	ON	ON	OFF	ON
4 COINS 2 CREDITS								
1 COIN 1 CREDIT								
2 COINS 2 CREDITS								
3 COINS 3 CREDITS	OFF	OFF	ON	ON	OFF	OFF	ON	ON
4 COINS 4 CREDITS								
5 COINS 5 CREDITS								
1 COIN 1 CREDIT								
2 COINS 2 CREDITS	ON	OFF	ON	ON	ON	OFF	ON	ON
3 COINS 3 CREDITS								
4 COINS 4 CREDITS								
1 COIN 1 CREDIT	OFF	ON	ON	ON	OFF	ON	ON	ON
2 COINS 2 CREDITS								
1 COIN 1 CREDIT	ON	ON	ON	ON	ON	ON	ON	ON

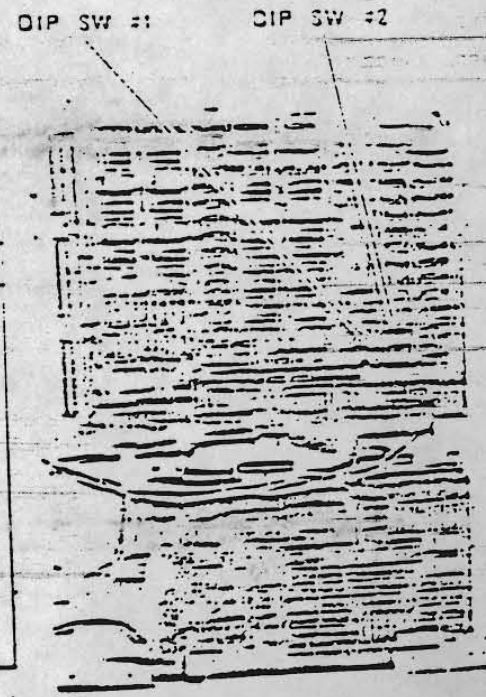
COIN SW #1                      COIN SW #2



## ○ ゲーム条件の設定

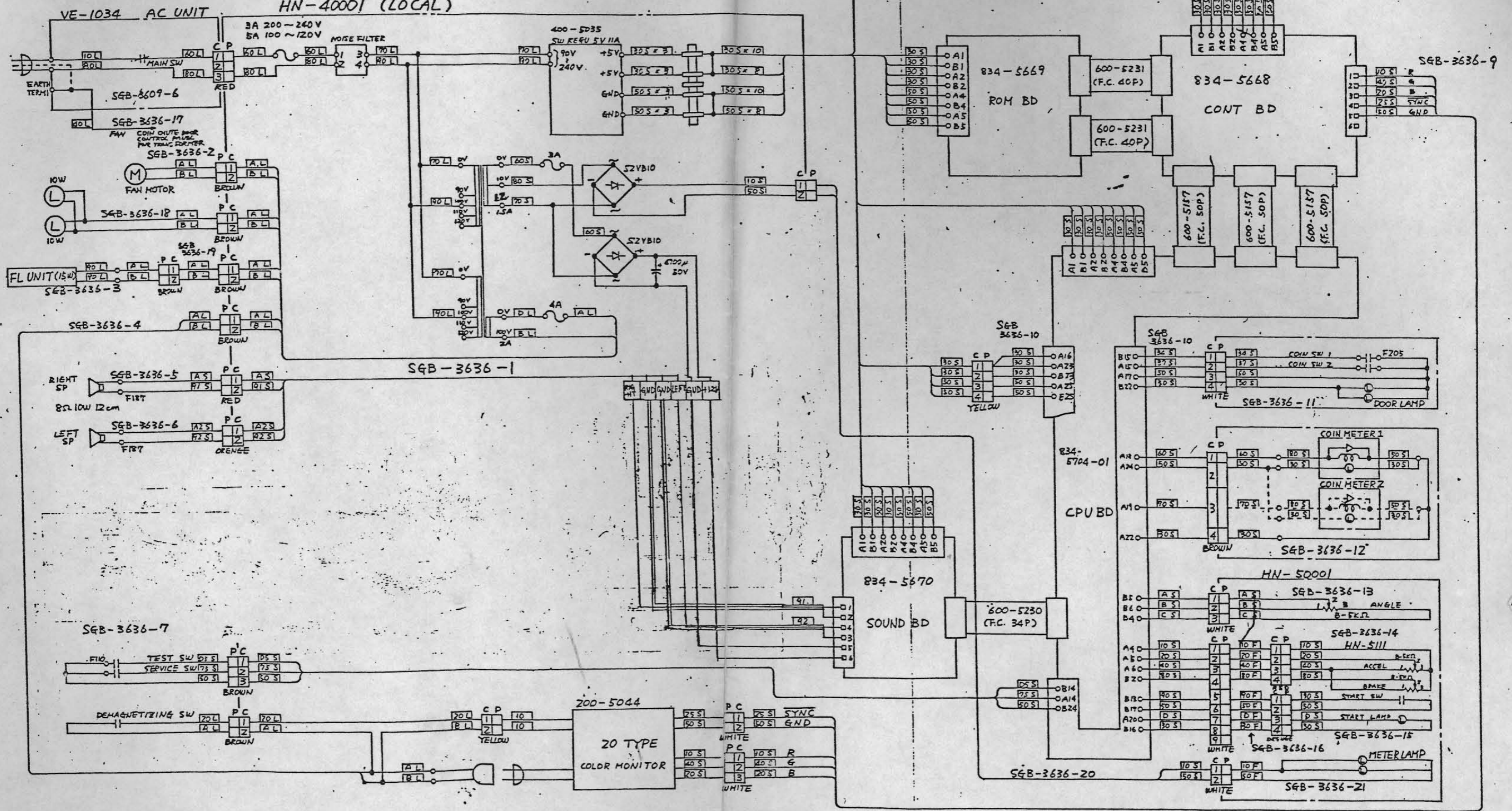
DIP SW #2

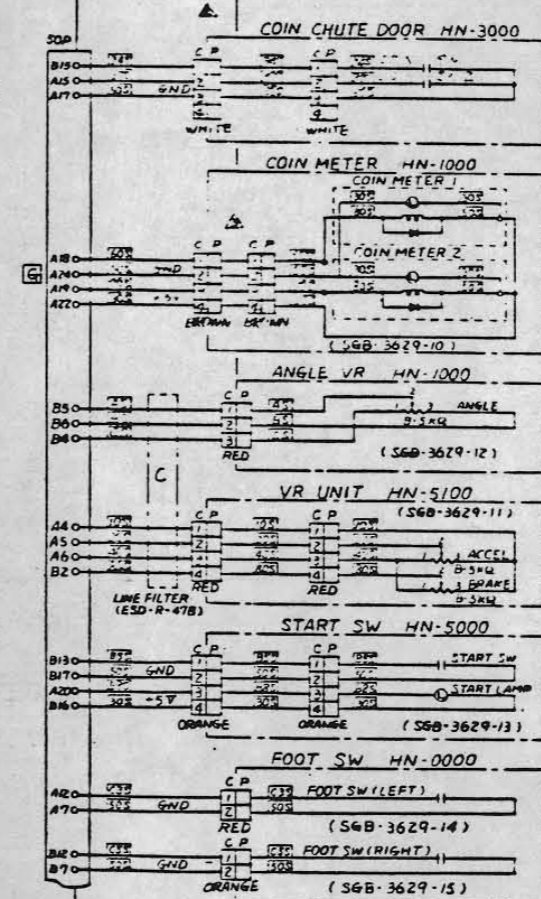
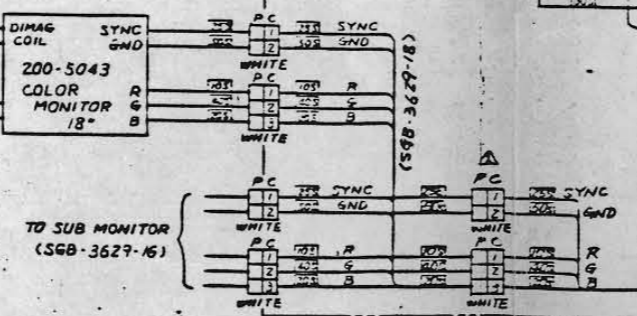
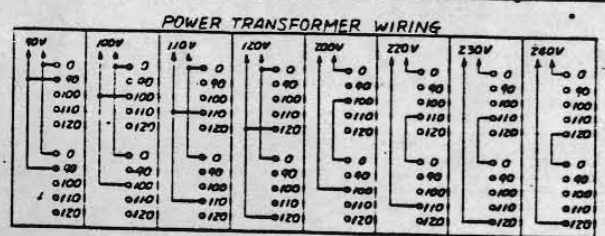
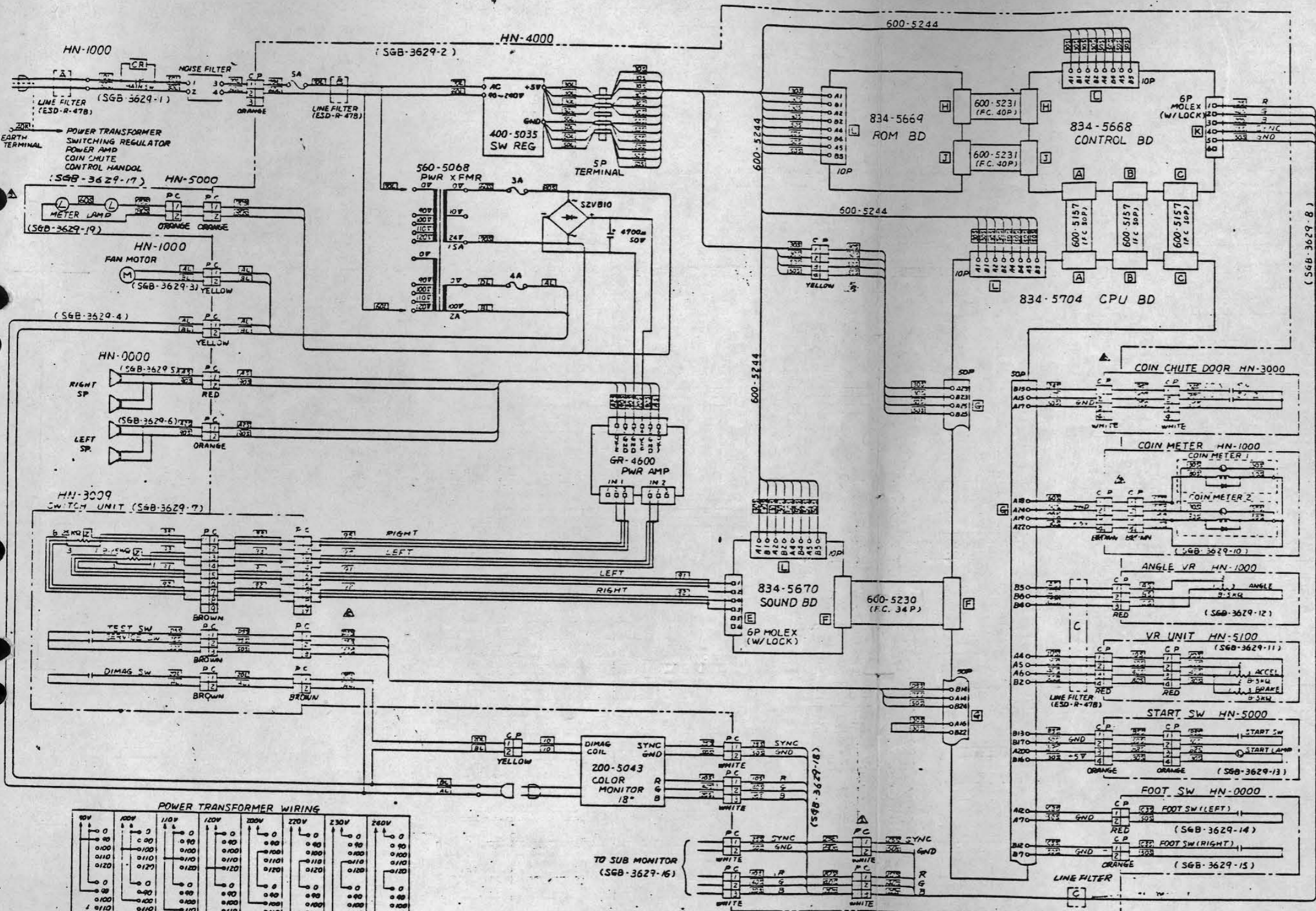
OPTION	1	2	3	4	5	6	7	8
ゲーム終了時のサウンド	OFF	OFF						
	ON	ON						
ゲーム難易度 (他国の出現) (地区)	MEDIUM		OFF	OFF				
	EASY		ON	OFF				
	HARD		OFF	ON				
	HARDEST		ON	ON				OFF
ゲーム中の音楽	EASY				OFF	OFF		
	MEDIUM				ON	OFF		
	HARD				OFF	ON		
	HARDEST				ON	ON		
ゲーム中のミュージック	ON							OFF
	OFF							ON



○ ゲームの難易度の設定に関する詳細は P 10 を参照のこと。

HN-400Z (EXPORT)  
HN-400I (LOCAL)





VOLTAGE	110-130V	200-240V	100V		
STAND-BY	140 W	W	135 W		
MAXIMUM	190 W	W			
POWERS		POWER CONSUMPTION		CIRCLE IN THE SWITCH SYMBOLS INDICATES OPERATION BY A MOTOR	
3		K	KING WIRE (30 W)		NAME AND BREAK SWITCH
8		L	LARGE WIRE		
7		J	JUMPER WIRE		NORMALLY CLOSED SWITCH OPEN WHEN ENERGIZED
6		D	LIGHT BREEK		
5		F	PURPLE		NORMALLY OPEN SWITCH CLOSED WHEN ENERGIZED
4		C	BROWN		
3		B	2ST BLUE		
2		A	PINK		
1		9	GRAY		
ALTERATION		8	BLACK	SWITCH SYMBOLS	
		7	ORANGE	APR	5/1-85
		6	HARDON	ASSY	6/13-85
		5	WHITE	CK'D	6/13-85
		4	GREEN	SW	6/13-85
		3	YELLOW	DRW	6/13-85
		2	BLUE		
		1	RED		
ABBREVIATIONS USED		WIRE COLOR CODE		SGB-3629	
RIDE ON TYPE		T.W.C. QUART NO.		869	
SEGA HANG ON (100V-240V 50/60 HZ)		DESCRIPTION		SCHEMATIC DIAGRAM NO.	

95-2674

DESCRIPTION: SEGA HANG ON (100V-240V 50/60 HZ)

SCHEMATIC DIAGRAM NO.: 869