

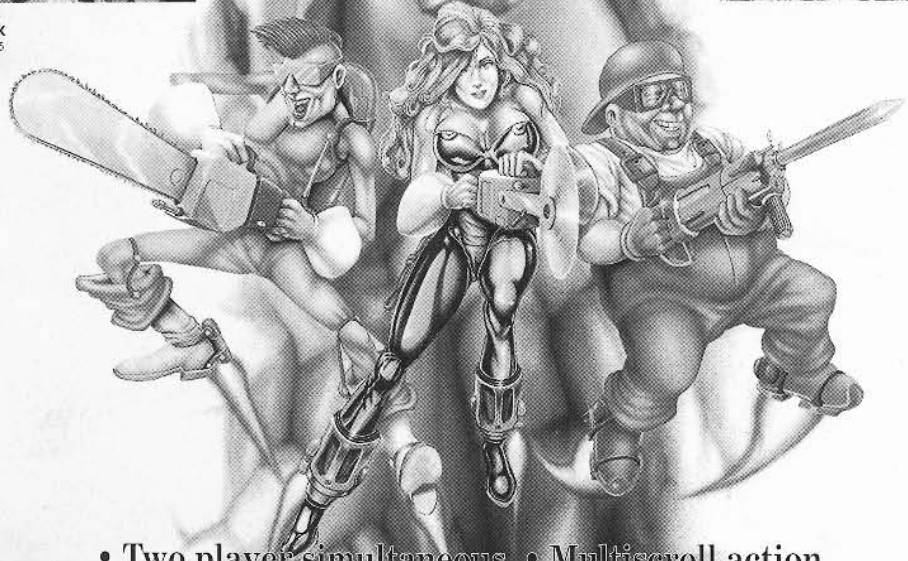
OPERATOR'S MANUAL

EXCELSIOR[®]



BREAK THROUGH THE
COVERS THAT HIDE THE
AMAZING SEXY GIRLS
OF EXCELSIOR

Playmark
© 1995

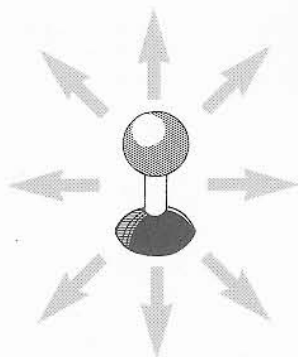


- Two player simultaneous • Multiscroll action
- Switchable levels of censorship • Both girls and boys photographs
- Photo screen with 256 colours (512x512 photos, 1/2 zoom)
- Horizontal screen • Six fantastic scenarios

P C B CONECTOR JAMMA

CONTROL PANEL

SOLDER SIDE	PIN	NO.	COMPONENTS SIDE
GND	A	1	GND
GND	B	2	GND
+5V	C	3	+5V
+5V	D	4	+5V
	E	5	
+12V	F	6	+12V
	H	7	
COIN COUNTER 2	J	8	COIN COUNTER 1
COIN LOCKOUT 2	K	9	COIN LOCKOUT 1
SPEAKER (-)	L	10	SPEAKER (+)
	M	11	
GREEN	N	12	RED
SYNC	P	13	BLUE
SERVICE	R	14	VIDEO GND
	S	15	
COIN IN 2	T	16	COIN IN 1
2P START	U	17	1P START
2P UP	V	18	1P UP
2P DOWN	W	19	1P DOWN
2P LEFT	X	20	1P LEFT
2P RIGHT	Y	21	1P RIGHT
2P FIRE	Z	22	1P FIRE
2P WORK	a	23	1P WORK
2P BOMB	b	24	1P BOMB
	c	25	
	d	26	
GND	e	27	GND
GND	f	28	GND



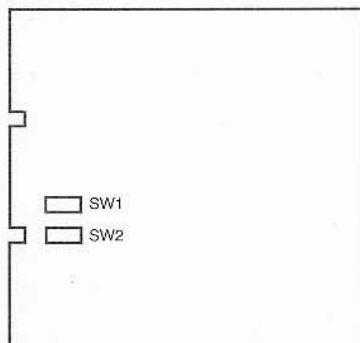
fire



work



bomb



ITEM	DESCRIPTION	DIP SWITCH 2							
		1	2	3	4	5	6	7	8
NUMBER OF LIVES	3	OFF	OFF						
	2	ON	OFF						
	4	OFF	ON						
	1	ON	ON						
CENSURE	TOTAL			OFF	OFF				
	PARTIAL			ON	OFF				
	EXCLUDED EXCLUDED			OFF ON	OFF ON				
DIFFICULTY	NORMAL					OFF	OFF		
	EASY					ON	OFF		
	HARD					OFF	ON		
	VERY HARD					ON	ON		
CONTINUE PLAY	YES							OFF	
	NO							ON	
DEMO SOUND	NO								OFF
	YES								ON



Playmark

playmark srl.
20159 milano via g. murat 28 telefoni 02-66803664 fax 02-66803684